

Ground-mounted V Structure System



1.Chiko 2V Ground Mounting system

chiko V mounting systems are designed in order to provide an economic and convenient mounting solution, while allowing for small, middle, or large scale installation of PV power plant in most any landscape situation. Such as ground screw, concrete foundation or pile-driven into the ground.

System layout and design depend on detailed analysis of the respective area in order to gather the necessary information for wind and snow load as well as soil composition.

Specification:

| | |
|--------------------|--|
| Installation Site: | Flat roof&pen filed |
| Wind Load: | <40m/s |
| Snow Load: | <1.4KN/m2 |
| System Tilt Angle: | 20 / 25deg, 30 / 35deg, 40 / 45deg |
| Applicable Module: | Framed or thin film |
| Module mounting: | portrait or landscape |
| System Material: | Steel hot-dip galvanized |
| Foundation: | concrete base |
| Warranty: | 10 years warranty and 20 years service life |

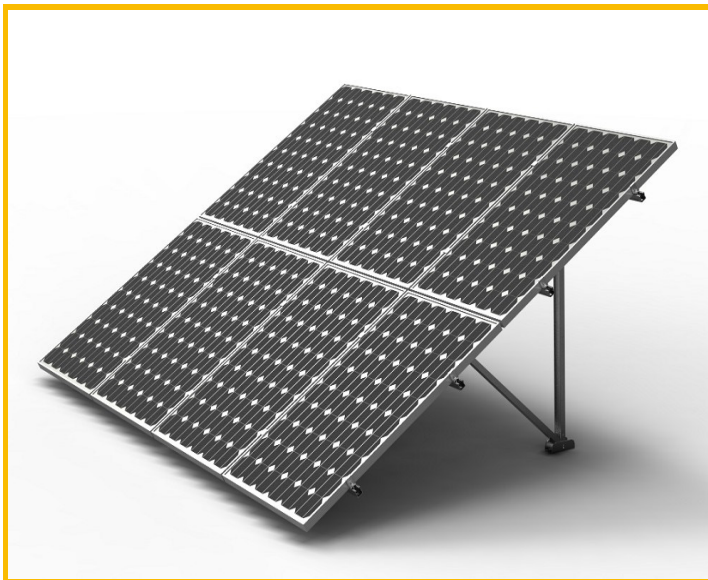


Features and benefits:

Ground mount system II & III product enhancements Adjustable angle, 20 / 25deg, 30 / 35deg 40 / 45deg. V legs are preassembled in factory prior to shipping

- Valuable installation time is saved, take 4 simple steps are done in this part :
 - Fix foot to foundation
 - Insert the connect beam between two feet
 - Install the rail ----that is it.
 - Fix the solar panels---then all done.
- For all kind of module including thin film modules, clamps are available.
- The connect beam is designed for the optional two angle
- Module mounting can be in portrait or landscape, usually in portrait.
- All material support structure are in hot-dip galvanized with G235B (Q235B)
- clamps: stainless steel 304 and Aluminium alloy 6005 T5
- Individual system design calculation based on regional load available

Single V Mounting system show:



Experience that pays

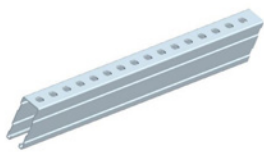
Chiko Solar or your local Chiko Solar partner individually match all kinds of the solar modules and installation situation to ensure that you get the ideal system to meet your requirements. All of our sales partners have a considerable amount of expertise and many years of experience in solar technology and have been personally chosen by us according to the strictest quality criteria.

2. Tools required

- Tape measure or other type measurer
- Open-ended spanner set 9, 10, 17, 19 mm
- 6 mm Allen key
- Torque Wrench
- Spirit level or plumb or other relevant tool
- Rubber hammer



3. Overview of the components



Rail 3100mm/4200mm



Rail connector kit



Single V front leg



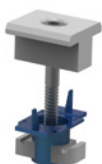
Connect beam



U clamp SUS304



Folding V support structure
(pre-assembled)

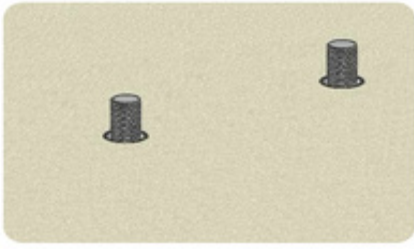


Module middle clamp set
(pre-assembled)



Module end clamp set
(pre-assembled)

4. Assembly step by step



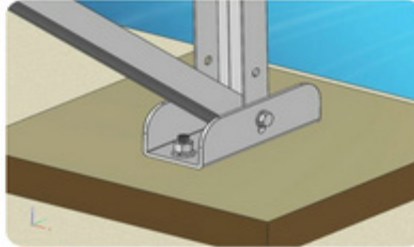
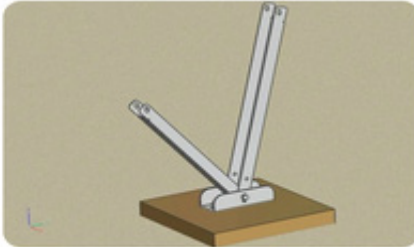
1

Pre-assemble expand bolts or ground screw



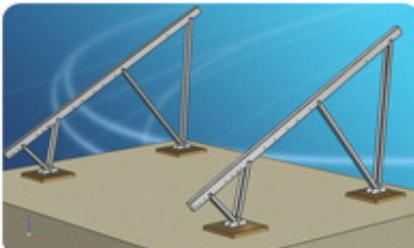
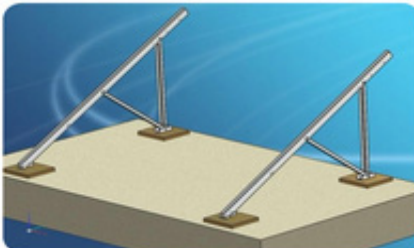
2

Fix V leg into expand bolts or ground screw



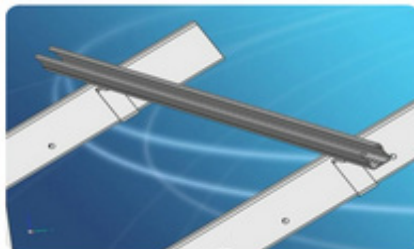
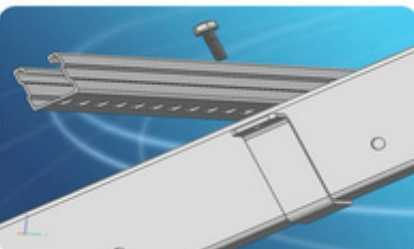
3

Fix the connect beam between two V legs



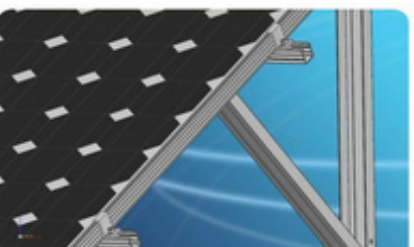
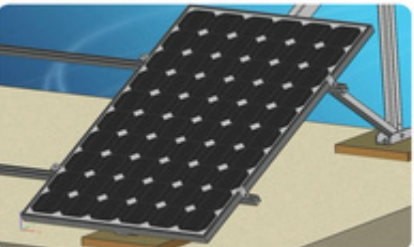
4

Fix rail onto connect beam



5

Fix solar panel on structure via mid and end clamps



6

Finish all array job

