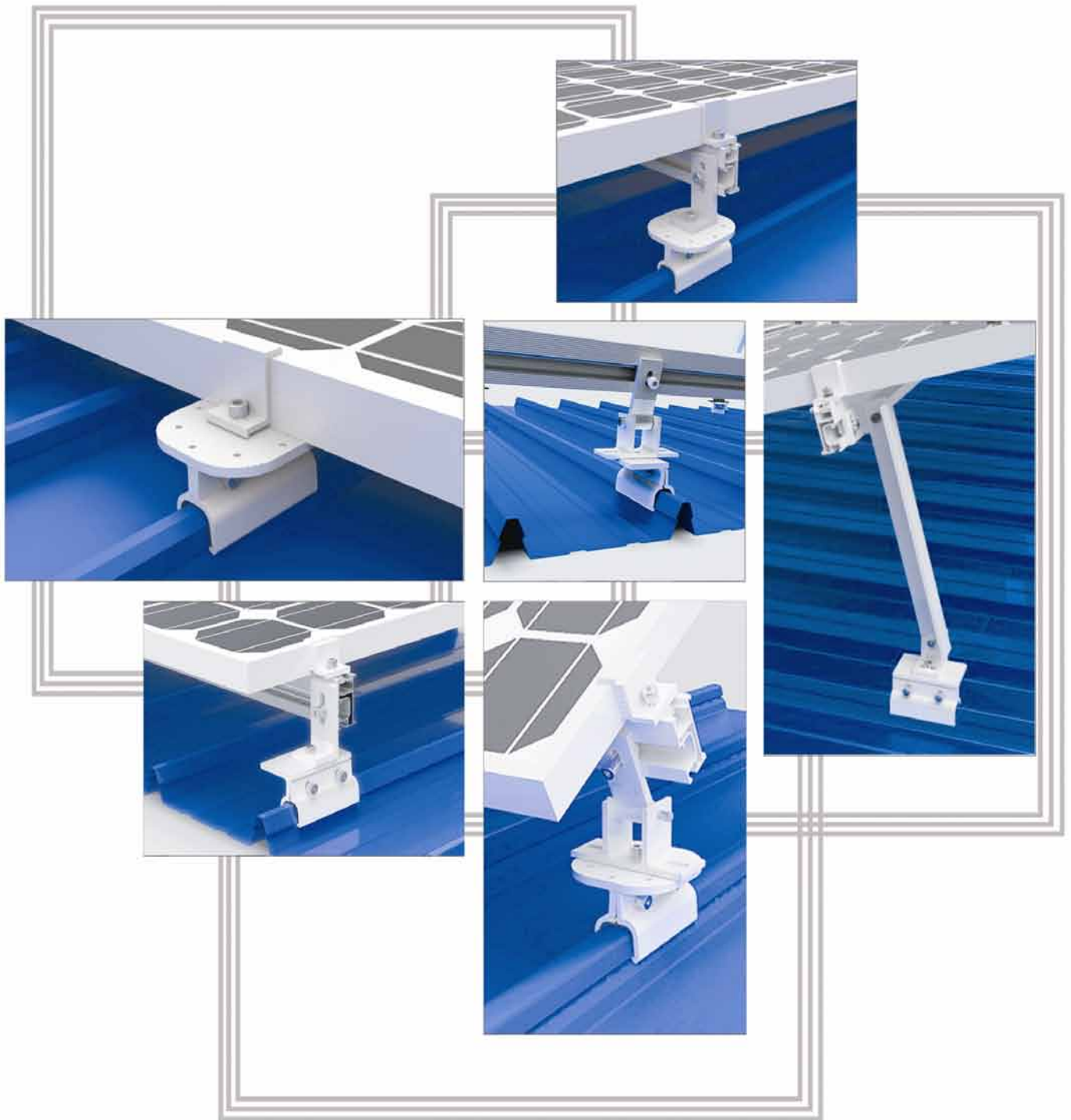


Sheet Metal Roof Clamp



CHIKO SOLAR

MOUNTING SYSTEMS

sales@chikolar.com

www.chikolar.com

Benefit

Chiko Cliplok406&700 is specially designed for sheet metal roof, Workable for fix panels on roof without puncturing the sheet. Traditionally, to mount solar panels on sheet metal type roofs you usually have to drill holes into the cladding, causing permanent damage to the roof. And if you would like to take them off, you will need to pay to repair the damage on your roof. Actually, You totally can avoid these problems. CHIKO new bracket provides you with a new non-penetrating solution.

Quick and easy to install

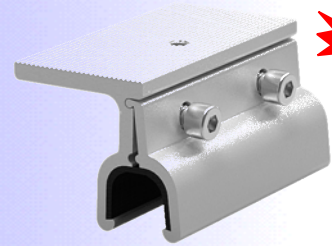
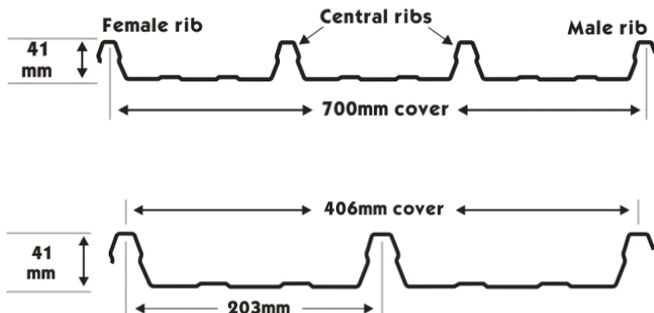
The bracket can be attached directly on most of sheet metal type roof and allows you to install tilt leg kits, highly pre-assembled.

Data

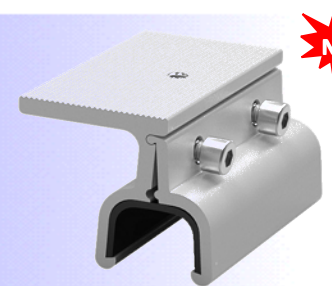
- Material : AL6005-T5&anodized
- With: EPDM rubber &SUS304bolt
- 10 years products warranty
- AS1170 certificated.

Roof style

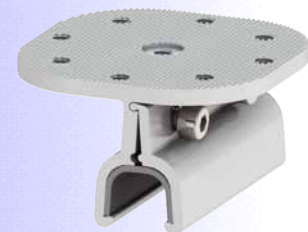
Suitable for Kilplok 406&700 style roof, but can be do some changes to meet your requirement to suit most of sheet metal type roof.



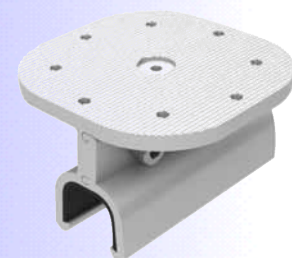
CK-TC406-2N



CK-TC700-2N



CK-FZ-TC-406



CK-FZ-TC-700

